



# Consat Telematics Vehicle and Fleet Management

## Consat Telematics Vehicle and Fleet Management

Public transportation operators face numerous challenges in managing their fleets, which can significantly impact the reliability, safety, and efficiency of public transportation services. Fleet managers must monitor vehicle conditions, manage maintenance schedules, and ensure regulatory compliance, all while optimising operational efficiency and reducing costs. Unexpected breakdowns, inefficient energy use, and compliance demands add complexity to this already demanding task.

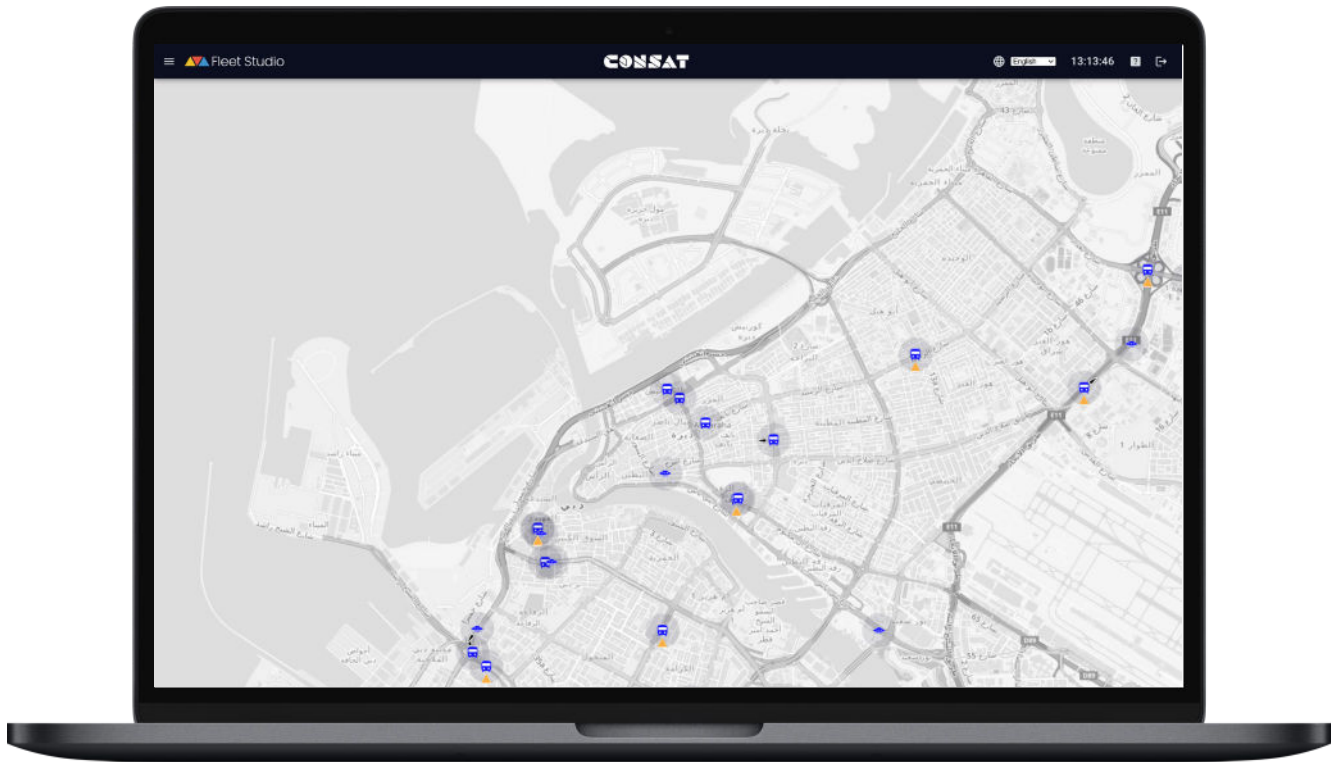
Another key aspect is ensuring operational readiness. This involves preparing vehicles for service, monitoring energy consumption, and addressing faults before they escalate. Additionally, operators must handle the administrative burden of managing compliance requirements, such as tachograph data and safety systems, which can detract from their ability to focus on improving service quality.

Consat Telematics' Vehicle and Fleet Management solution is designed to alleviate these challenges. Integrating real-time vehicle data with public transportation operations allows for optimal traffic control and monitoring. This enables operators



## Key functions

- **Equipment Management and Diagnostics:** Provides a clear fleet overview, monitoring vehicle status through an interface that shows active faults, fault code distribution, and fault severity. It includes tools for detailed fault history analysis and remote troubleshooting capabilities. Diagnostic files can be requested for in-depth troubleshooting with the aid of specialists.
- **Energy Efficiency:** Tracks energy consumption patterns, promotes eco-friendly driving practices, and includes features like smart cooling, heating, and energy-saving preconditioning to reduce operational costs.
- **Operation Preparation:** Includes automated pre-/post-operational checklists, tachograph management, and alcolock integration to ensure vehicles meet



## The benefits for public transport operators and authorities

- **Improved fleet insights:** Provides live tracking of vehicle locations and onboard system status, enabling better planning and improved service quality.
- **Cost efficiency:** Optimised maintenance schedules and energy management reduce operational costs.
- **Regulatory compliance:** Integrated tools ensure vehicles meet legal and safety standards.
- **Service quality:** Reliable and well-maintained fleets improve passenger satisfaction.
- **Sustainability:** Energy-efficient features and emissions tracking support environmental initiatives.



## Traffic Control and Monitoring

Manage daily operations with real-time information and data insights.

## Vehicle and Fleet Management

Vehicle telematics integrated into public transportation for complete control.

## Passenger Information

Enhance the travel experience for all public transportation users.

## Driver Assistance

Enhance hiring appeal while supporting the driver in their daily work.

## Electromobility

Seamless integration with existing public transportation operations, providing a unified view of the entire fleet.

## Data Insights

Offering valuable insights for continuous improvement in public transportation operations.

# Bringing intelligent public transportation to life

Consat Telematics is dedicated to reducing the environmental impact of public transportation through cutting-edge innovation and widespread implementation. Aspiring to global leadership in executing electrification and digitalization within public transportation, we serve diverse markets and organizations.

Our promise is a user centric, modular, and adaptable intelligent public transportation solution that never compromises on quality, reliability, and security. By placing our customers at the core, we ensure that more organisations can receive better data to monitor, manage, and improve their operations.

Contact for more information or a demo:

[www.consat.com/telematics/](http://www.consat.com/telematics/)

